



# Guide to GSOSW Properties





*Your next adventure  
awaits at a GSOSW  
property!*

# Table of Contents

---

*Properties Map* *Pages 3-4*

---

*Property Uses* *Pages 5-6*

---

*Camps* *Pages 7- 12*

Camp Arrowhead  
Camp Cleawox  
Camp Whispering Winds

---

*Outdoor Program Centers* *Pages 13-16*

Mountaindale  
Ruth Hyde  
The Homestead

---

*Indoor Program Centers* *Pages 17-18*

Albany Program Center  
Newport Program Center  
Seaside Program Center

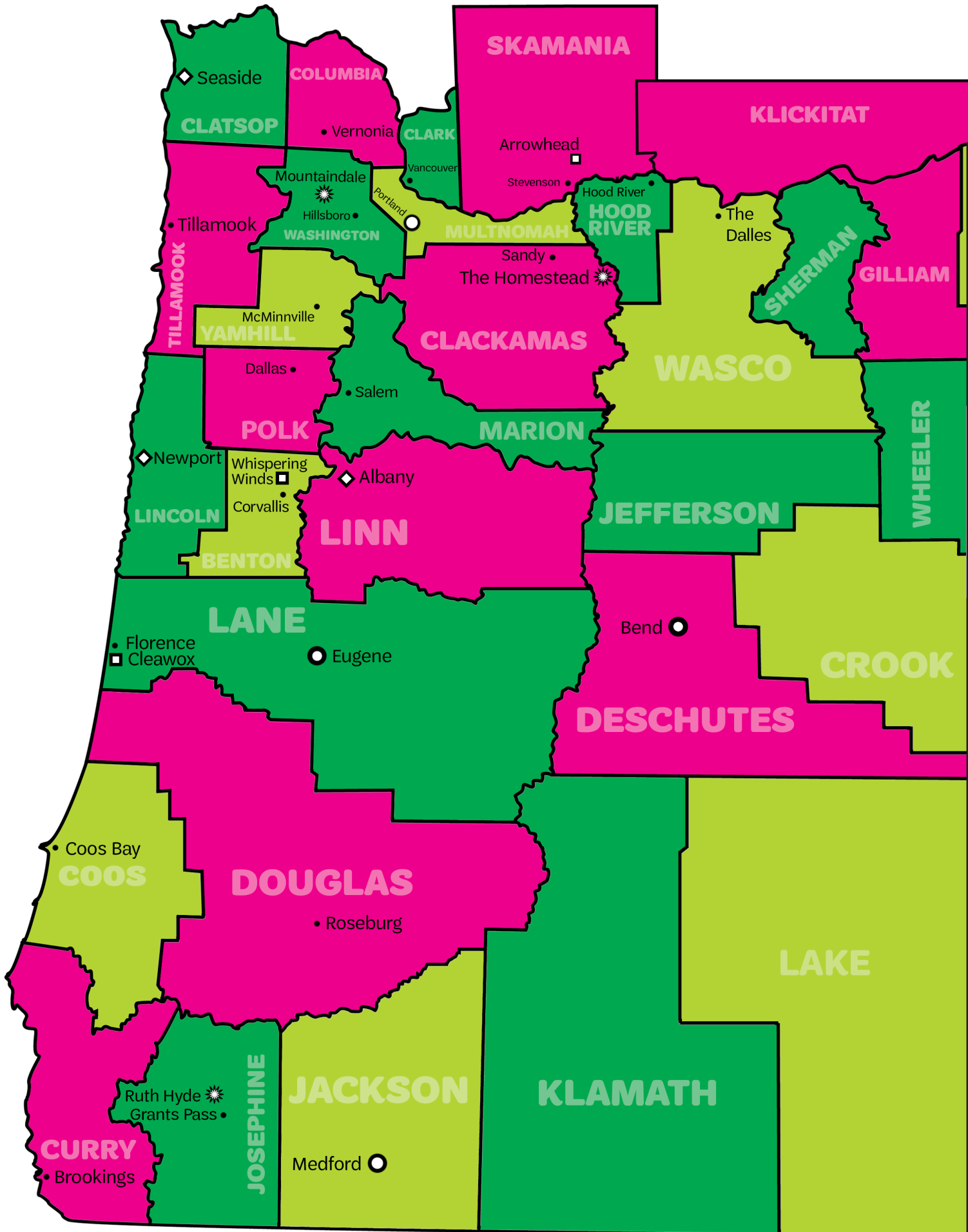
---

*Service Centers*

Bend Service Center *Pages 19-20*  
Eugene Service Center  
Medford Service Center  
Portland Service Center

---

*How to Reserve &  
Information for Volunteers* *Page 21*





## Map Legend



### SERVICE CENTER

Bend Service Center  
Eugene Service Center  
Medford Service Center  
Portland Service Center



### CAMP

Camp Arrowhead - Stevenson, WA  
Camp Cleawox - Florence, OR  
Camp Whispering Winds -  
Philomath, OR



### OUTDOOR PROGRAM CENTER

Mountaindale - North Plains, OR  
Ruth Hyde - Grants Pass, OR  
The Homestead - Rhododendron, OR



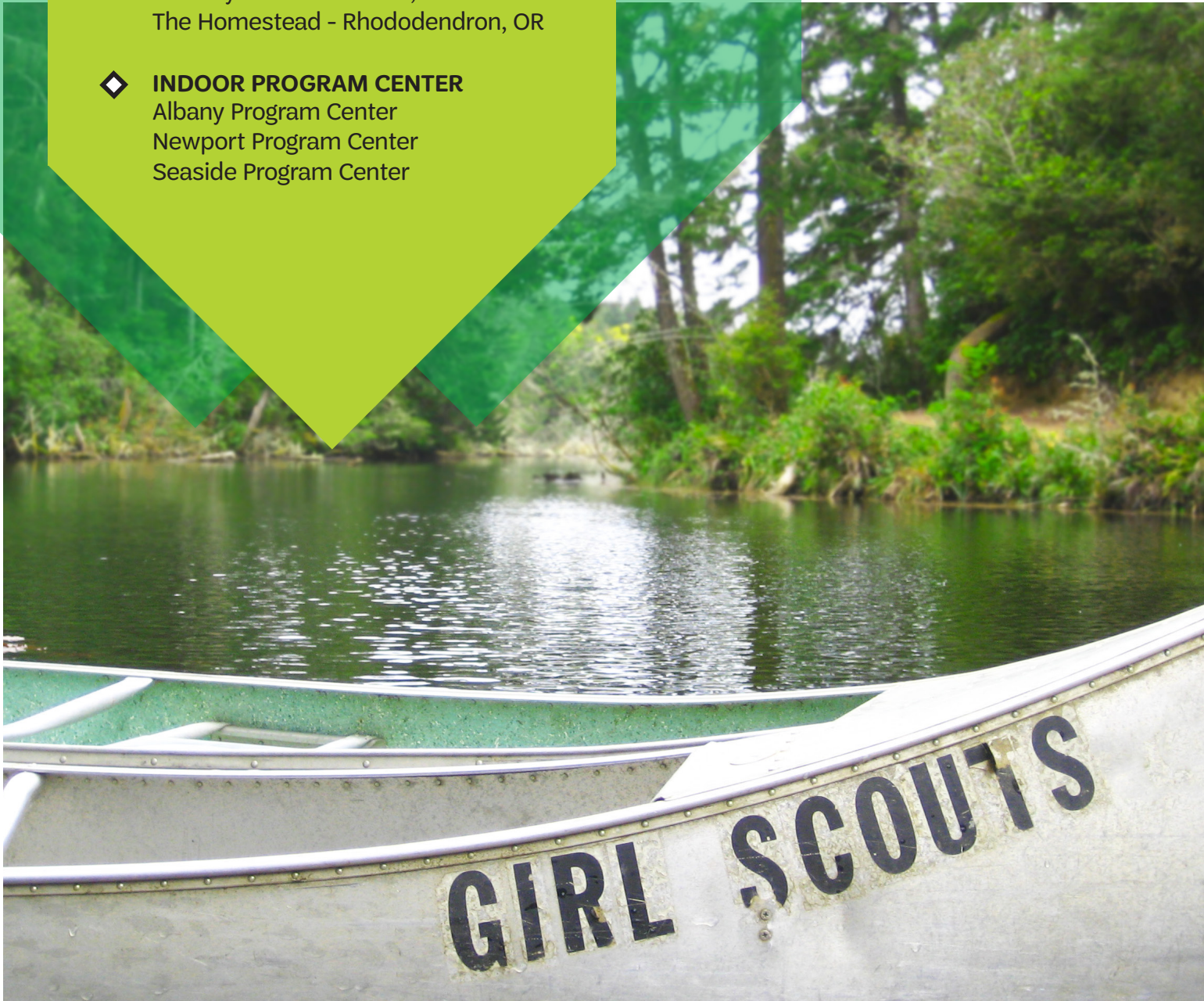
### INDOOR PROGRAM CENTER

Albany Program Center  
Newport Program Center  
Seaside Program Center



## Find the best location for you!

Looking for a coastal experience or a getaway into the forest? Are you planning an overnight Girl Scout troop campout or a corporate business meeting? From small events to large retreats, find the best site for you!





# Property Uses

---

Girl Scouts of Oregon and Southwest Washington has a variety of properties that can be used for many different activities. Indoor and outdoor program centers are available for Girl Scouts and private use year round for overnights, meetings, and special events. Overnight camp properties are available throughout the school year. Our facilities offer amenities such as canoeing, archery, ropes courses, and hiking trails. Our camp locations are accredited by the American Camp Association, which endorses us as having safe, high-quality programs that meet industry and government standards. Great experiences are in store when you reserve a GSOSW property!

## Service Unit & Troop Events

---



Your next Girl Scout adventure awaits at a GSOSW property! The Mountaindale Outdoor Program Center offers you lush green forests and a bird sanctuary. Camp Cleawox greets you near the beach with canoeing and nearby sand dunes. Want to sleep in a covered wagon close to a picturesque lake? Head to Camp Whispering Winds. How about exploring a new city with a safe and comfortable place to stay? We have you covered in cities throughout Oregon and Southwest Washington. Discover, learn, enjoy new experiences and create lasting memories!

## Retreats & Corporate Events

---







Some Girl Scouts of Oregon and Southwest Washington properties are available for use by the public. These properties feature beautiful outdoor spaces and ample overnight accommodations. When you hold your private or corporate event at a Girl Scout property, you are not only choosing a vibrant, scenic location for your group, you are also helping to build girls of courage, confidence, and character, who make the world a better place. 100% of your event fee supports Girl Scouting in the local community.

## *Weddings, Reunions and Other Special Events*



Host a rustic special event at one of our scenic and spacious properties! The entire property is for your indoor and outdoor use, with lodges, cabins, tent space, showers, and kitchens available.

The following properties are available for public rental:

### *Camp Arrowhead, Stevenson, WA*

300 person maximum capacity for indoor sleeping and outdoor day use.

### *Camp Cleawox, Florence, OR*

188 person maximum capacity for indoor sleeping and outdoor day use.

### *Camp Whispering Winds, Philomath, OR*

228 person maximum capacity for indoor sleeping and 300 for outdoor day use.

### *Mountaindale, North Plains, OR*

128 person maximum capacity for indoor sleeping and 250 for outdoor day use.

### *Ruth Hyde, Grants Pass, OR*

100 person maximum sleeping capacity (primitive) and 150 for outdoor day use.

### *The Homestead, Rhododendron, OR*

40 person maximum sleeping capacity and 100 for outdoor day use.

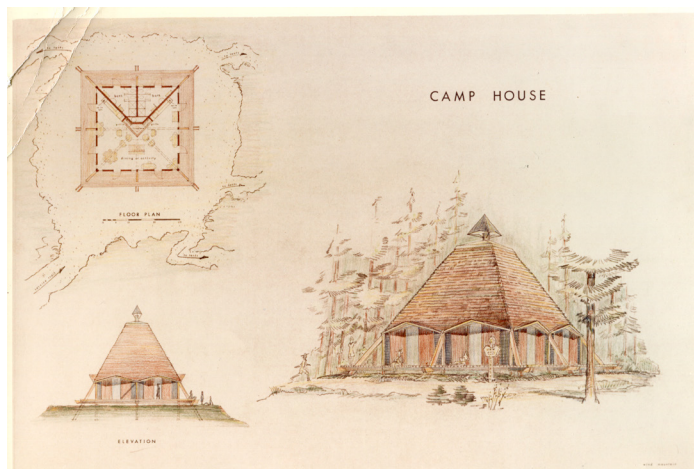


# Camp Arrowhead

Located in the Columbia River Gorge near Stevenson, Washington, Camp Arrowhead has 260 acres of forest, meadows, trails, a pool and a lake. Camp Arrowhead is located at the base of Dog Mountain and Wind Mountain and has varied terrain and dramatic views. It's also a great place to set up base camp for many other adventures in the Gorge such as mountain biking, climbing, wind surfing, kayaking and more! Not ADA accessible. Please note that Camp Arrowhead is unavailable during summer camp season. Contact us for availability. **300 person maximum capacity for indoor sleeping and outdoor day use.**

## HISTORY

After a five year search, this property at Wind Mountain was purchased in 1948. Originally called Camp Wind Mountain, plans quickly formed to build roads, erect buildings, establish a water system and bring in electric power. By 1964, the changing landscape and wear of old buildings called for reconstruction. The camp officially became Camp Arrowhead in 1968, and much of the lodging still standing today was built in this era. Amenities like the swimming pool were added later. In 2005, the Marie Lamfrom climbing wall was constructed.



Archery is available year-round and equipment is provided. Groups must provide their own archery instructor.



There is a fire pit in all the unit house areas. Wood is provided.



A climbing wall is available year-round. Groups must provide their own trained instructor.



There are canoes and kayaks for boating on the lake. Groups must provide their own lifeguard who is small craft certified.



The lake has a dock for swimming, and a pool is available seasonally. Groups must provide their own certified lifeguard.



# Facilities & Lodging

## MAIN LODGE AREA

There is an inside dining area with a large fireplace that can seat approximately 64 and an outside covered dining area that seats 150. There is a large, fully-equipped commercial kitchen. Dishes and utensils available. Sleeping is on the floor with mattresses provided. A guest house and infirmary are also available. 40 person maximum sleeping capacity.

## UNIT HOUSE AREAS

There are four unit house areas, each surrounded by nine rustic cabins sleeping four people each on bunks. The unit houses have an overnight capacity of 15 people. Each unit house has toilets, showers, electricity, a small kitchen with stove and fireplace insert. 51 person sleeping capacity for *each* unit area, 204 person maximum sleeping capacity.



## STAFF HILL

This area is nearest to the lodge. There are four rustic “birdhouses” that sleep four people each. There is also a director’s cabin that sleeps three. Flush toilets and showers are nearby. 19 person maximum sleeping capacity.

## CELILO

A rustic cabin away from the main camp, this facility has a commercial-style kitchen, wood-burning cook stove, fireplace with insert, and biffy. 20 person maximum sleeping capacity.

## Nearby Activities



**RAFTING  
AND TUBING**



**MOUNTAIN  
BIKING**



**WIND  
SURFING**

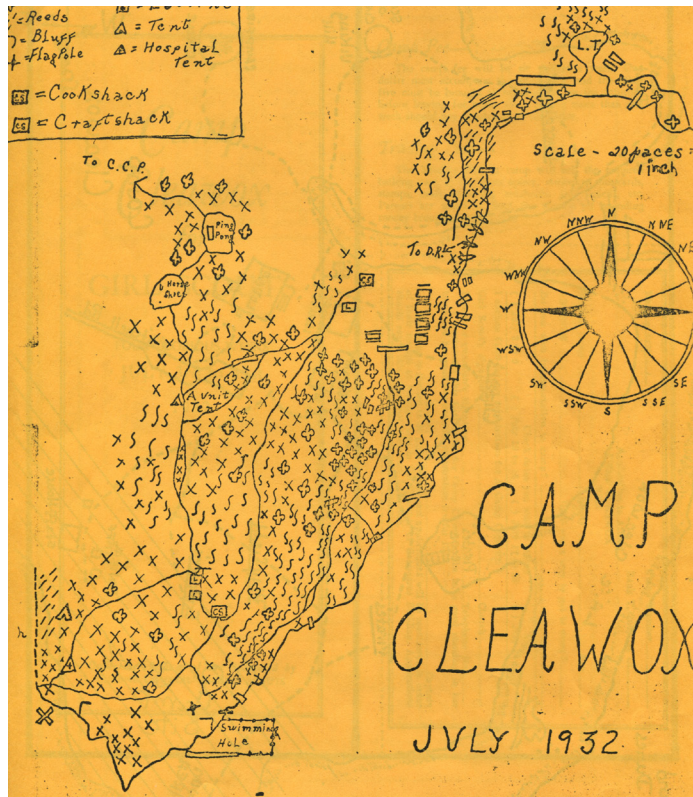
**COLUMBIA GORGE INTERPRETIVE CENTER**

**ZIP LINE AND AERIAL PARK TOUR**





# Camp Cleawox



Located two miles south of Florence in the Oregon Dunes National Recreation Area, this 47 acre site is situated on a freshwater lake near the beach. Please note that Camp Cleawox is unavailable during summer camp season. Contact us for availability. **188 person maximum capacity for indoor sleeping and outdoor day use.**

## HISTORY

Cleawox—an English pronunciation for a Native American word meaning alder (clea) paddle (wox)—is the name given to the adjacent lake and Camp Cleawox. Girl Scouts began camping at the site before the signing of a property lease with the United States Forest Service on May 8, 1930. Much of the camp has been built and rebuilt over the last 90 years, most significantly the new main lodge in 1996, which is equipped with a large dining area, commercial kitchen, two bathrooms, showers and a fireplace.



Archery is available year-round and equipment is provided. Groups must provide their own archery instructor.



There are fire pits at all units. Wood is provided.



A low ropes course is available year-round.



There are canoes, kayaks and paddleboards for boating on the lake. Groups must provide their own lifeguard who is small craft certified.



The lake has a dock area for swimming. Groups must provide their own certified lifeguard.



# Facilities & Lodging

## MAIN LODGE

This heated building sleeps 20–40 on the floor, with mattresses provided. The dining area seats 150. There is a large, fully-equipped, commercial kitchen with dishes, utensils and a dishwasher. There is also a washer, dryer and restrooms. ADA accessible.

## PIRATES ADIRONDACK UNIT

This unit has three Adirondacks (three-sided cabins open at the front) each sleeping eight in bunks and a staff house that sleeps four. Fire pits, biffies, cold running water, picnic tables, and no electricity. One adirondack is ADA accessible. 24 person maximum sleeping capacity.

## EXPLORERS ADIRONDACK UNIT

This unit has three Adirondacks, two with four bunks that sleep eight, one with five bunks that sleep ten and a staff house that sleeps four. Fire pits, flushing toilets, cold running water, picnic tables, and no electricity. One adirondack is ADA accessible. 30 person maximum sleeping capacity.

## STAFF HOUSE & AREA

A heated building with a kitchen, restrooms, showers, washer, dryer and wood stove and three nearby cabins. Sleeping is on the floor and bunks with mattresses provided. 38 person maximum sleeping capacity. ADA accessible.

## BUCCANEERS YURT UNIT

This unit has three yurts that sleep eight each, and one enclosed cabin that sleeps four. Fire pits, biffies, cold running water, picnic tables, and no electricity. Cooking may only take place in the fire pits. 28 person maximum sleeping capacity.

## CLIPPERS CABIN UNIT

This unit has four small cabins with bunks that sleep six, and a staff house that sleeps four. Fire pits, biffies, cold running water, wash station, picnic tables, and no electricity. One cabin is ADA accessible. 28 person maximum sleeping capacity.

## Nearby Activities



**SAND BOARDING & DUNES**



**HOBBIT TRAIL**



**SEA LION CAVES**





# Camp Whispering Winds



This 220 acre camp is located in the lush hills of Kings Valley, northwest of Philomath and Corvallis, Oregon. The property has picturesque meadows, forests, a central lake, ponds, and a pool. Please note that Camp Whispering Winds is unavailable during summer camp season. Contact us for availability. **228 person maximum capacity for indoor sleeping and 300 for outdoor day use.**



## HISTORY

The camp was purchased from the Willis L. Woods family in 1959. In 1960, a contest was held to give this camp a name. Linda Allen, with her entry, “Whispering Winds,” was awarded the winner at the dedication ceremony on May 1, 1960. Construction was completed in the mid-1960s, and many of the structures, with renovations, remain today.



The pool is available seasonally for swimming. Groups must provide their own certified lifeguard.



Archery is available year-round and equipment is provided. Groups must provide their own archery instructor.



A low ropes course is available year-round.



There are canoes for boating on the lake. Groups must provide their own certified lifeguard who is small craft certified.



12 mountain bikes of various sizes are available for rental. Helmets are provided.



There are fire pits at all units. Wood is provided.



# Facilities & Lodging

## RICHARD'S LODGE

This building has an open room for 29 sleeping on the floor, on two bunks and one additional bed. There is a kitchen, shower, an indoor restroom, and outdoor latrines. A wood fireplace insert heats the building. Covered decks overlook the lake and there is a covered area beneath the lodge. ADA accessible. 34 person maximum sleeping capacity.

## OAKS LODGE

This building has 10 beds and 16 can sleep on the floor. A covered deck, a small kitchen, and shower. There is an indoor bathroom and outside latrines. A wood-burning fireplace heats the building. 26 person maximum sleeping capacity.

## ASH GROVE & MAPLE VALLEY

Both areas have eight 12' x 14' tent houses with four beds in each. There are portable toilets, seasonal cold running water, a fire circle and a large covered open-air shelter. ADA accessible. 64 person maximum sleeping capacity.

## ALDERVIEW

This area has five cabins that sleep eight people each in bunks. There are outdoor latrines, cold running water, and a fire circle. 40 person maximum sleeping capacity.

## COVERED WAGONS

There are five "wagons" with four beds, and one 12' x 14' tent house with four beds. Portable toilets, cold running water, fire circle, and a large sheltered open-air area nearby. Available seasonally. 24 person maximum sleeping capacity.

## SWALLOWS DINING HALL

This building sleeps 20-40 on the floor, with mattresses provided. The dining area seats 120. There is a fully-equipped commercial kitchen. Dishes and utensils provided. ADA accessible.

## Nearby Activities



**BENTON COUNTY  
HISTORICAL MUSEUM**



**PADDLE BOARDING**



**RAFTING AND TUBING**





# Mountaindale Outdoor Program Center

This hidden gem of 50 acres is located off Sunset Highway in North Plains, Oregon, filled with hiking trails, native plants, birds and other wildlife! There is a large meadow that is ideal for activities and a nearby pond, perfect for environmental study. Please note that Mountaindale has limited availability during summer camp season. Contact us for availability. **128 person maximum indoor sleeping capacity and 250 for outdoor day use.**



## MARILYN'S PLACE

This log cabin-style lodge has a large open space, bunk beds surrounding an upper mezzanine, restrooms and showers. There is a large, fully-equipped, commercial kitchen. Dishes and utensils provided. There is a wood stove and a deck with scenic views. 72 person maximum sleeping capacity. ADA accessible.



## THE RAFTERS

This open-air structure is mainly used for day activities. There is an attached kitchen adjacent to the fire pits. Easy access to tent sites and outdoor restrooms. In warm weather, the concrete floor may be used for sleeping; no mattresses provided. 22 person maximum sleeping capacity.



## THE PAVILION (PAVY'S)

This large one-room building has a fireplace, wood stove, sinks, refrigerator, microwave and cook top. Wood provided. Sleeping is on the floor with mattresses provided. Wheelchair accessible. Detached restrooms with showers are next door. 18 person maximum sleeping capacity. ADA accessible.







## Activities

This is an ideal location, just 20 minutes west of Portland, to explore and enjoy nature. Bird watching, on-site archery and bouldering are available for small groups. Certified instructors required. Come see the beauty of Mountaindale!

### ADIRONDACKS

These three-sided covered buildings open at the front and sleep eight each, in four bunks. Adjacent is a covered eating space and campsite area. Water and outdoor toilets in the area. No fire pit or electricity. 16 person maximum sleeping capacity.

### PRIMITIVE CAMPSITES

There are 26 sites to set up your tent for a more primitive outdoor experience.



**ARCHERY**



**BOULDERING WALL**



**GEOCACHING/LETTERBOXING**





# Ruth Hyde Outdoor Program Center

This 90 acre property is about seven miles west of Grants Pass and is used for day camps and primitive camping. There is a covered table area, large barbecue, volleyball court, fire circle, gaga pit, 14 campsites, and four latrines. There is an air-conditioned first aid room, tables, refrigerators and assorted equipment available. Water, electricity and PA system are also available. **100 person maximum sleeping capacity (primitive) and 150 for outdoor day use.**



## Nearby Activities

Adventure is always close by at Ruth Hyde! From on-site fun like volleyball and hiking, to nearby activities like river rafting and zip lining near Crater Lake—there is plenty to explore in southern Oregon!



**WILDLIFE STUDY**



**HIKING**



**RIVER RAFTING & TUBING**





# The Homestead Outdoor Program Center

This 32 acre property is located in the foothills of Mt. Hood on the historically significant Creighton Homestead in Rhododendron. All buildings are located in a clearing near the base of Hunchback Mountain. The lodge has a fully-equipped, homestyle kitchen with basic cooking and eating utensils, showers, flush toilets and a fireplace insert with wood provided. Sleeping is on the floor with mattresses provided. There is also a covered picnic area, covered play area and tent area. ADA accessible. **40 person maximum indoor sleeping capacity and 100 for outdoor day use.**

## Nearby Activities

There are many fun and exciting things to do while in the Rhododendron area. Whether it's summer or winter, the historical neighborhood of Creighton offers great adventures!



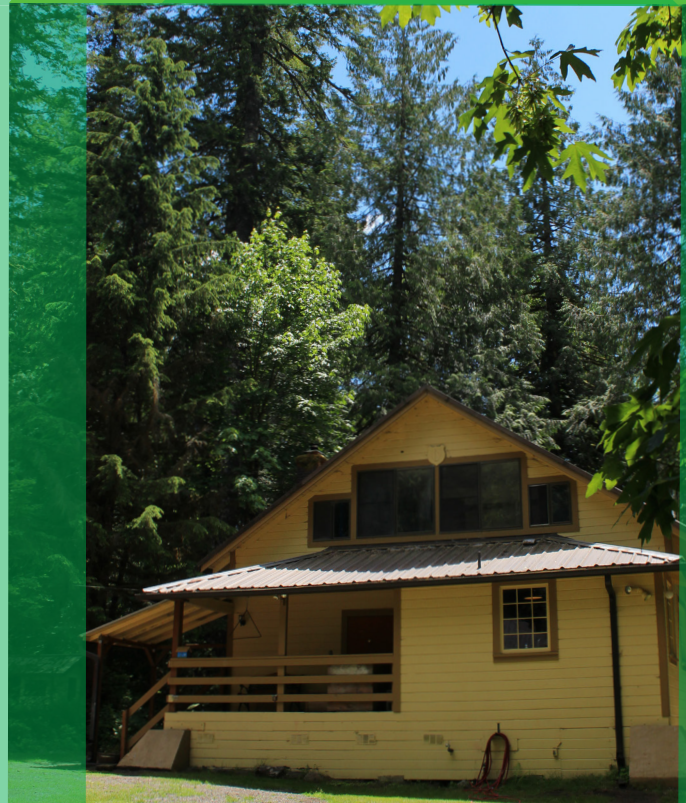
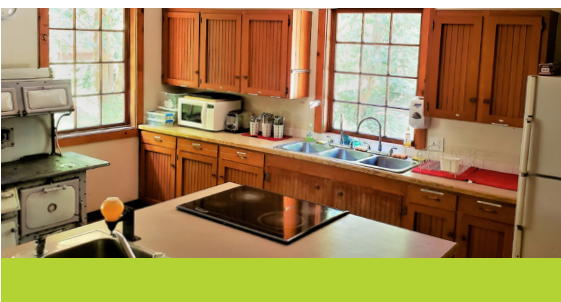
**SNOWSHOEING, TUBING  
AND SLEDDING**



**HIKING**



**MT. HOOD MUSEUM AND  
CULTURAL CENTER**





# Indoor Program Centers

Indoor program centers provide a convenient space to conduct your meetings, workshops, or Girl Scout activities. They are also a great location for troop overnights and special award ceremonies!

## Albany Program Center

Located in a residential area of Albany, this site includes a large meeting room with fully stocked kitchen, fireplace, restroom facilities, and plenty of tables. The fenced yard has a cement patio and grassy area. Great for meetings and overnights. No mattresses available. ADA accessible. **40 person maximum sleeping capacity and 70 for day use.**



## Newport Program Center

Located in residential Newport, just a few blocks from the beach and minutes from the Oregon Coast Aquarium and other fun excursions. Sleeping for six is in three bunks and also on the floor with mattresses provided. There is a fully-stocked homestyle kitchen and a bathroom with an ADA shower. Fenced yard includes a fire pit. **15 person maximum sleeping capacity.**





# Seaside Program Center

Located in the center of Seaside, an easy walk to the beach. Available for rental by registered Girl Scout members exclusively. Sleeping for four is in two bunks and eleven on the floor with mattresses provided. There is a fully stocked homestyle kitchen, a bathroom with shower and a fireplace insert. The city library is next door and a recreation center is across the street. Fun-filled experiences await you in Seaside! ADA accessible. **15 person maximum sleeping capacity.**





# Service Centers

Our service centers offer a variety of meeting and girl program spaces, amenities, and Girl Scout shopping. Stop by to pick up the latest in Girl Scout merchandise, or hold meetings, trainings and ceremonies!

## Bend Service Center

The Bend Service Center offers a wide variety of Girl Scout gear—from uniforms and clothing, to toys, games and more—at their Girl Scout Shop located in the Bend River Promenade. A small office adjoins the shop which includes a small conference space that accommodates up to 12 people. Address: 3188 N Hwy 97, Suite 109, Bend, OR 97703. Phone: 541-389-8146. Office hours: Monday-Friday, 9 a.m. – 4:30 p.m. Shop hours: Monday-Friday, 9 a.m. – noon, and 12:30 p.m. – 4:30 p.m.



## Eugene Service Center

The Eugene Service Center has a Girl Scout Shop as well as a 20-person conference room for volunteer training and other meetings. A restroom and a kitchenette are available. Conveniently located near University of Oregon's Autzen Stadium, at 72C Centennial Loop, Suite 300, Eugene, OR 97401. Phone: 541-246-1240; toll free: 800-522-8772. Office hours: Monday-Friday, 9 a.m. - 5 p.m. Shop hours: Monday-Friday, 9 a.m. - 5 p.m.; first Saturday of each month 10 a.m. - 2 p.m. September through June.





## Medford Service Center

The Medford Service Center is ideal for your meetings, workshops, or events during the day or evening, and great for overnight use when traveling and sight-seeing, as well as first overnight experiences. An array of amenities includes a Girl Scout Shop, an auditorium, full homestyle kitchen, restrooms, shower, fireplace and a large fenced yard with a pavilion. Day use capacity is 130; overnight capacity is 30 on the floor. Located at 2001 N Keene Way Dr., Medford, OR 97504. Phone: 541-773-8423; toll free: 800-433-9288. Office hours: Monday-Friday, 9am - 5pm. Shop hours: Monday-Friday, 9 a.m. - 5 p.m.; first Saturday of each month 10 a.m. - 2 p.m. September through June.



## Portland Service Center

Girl Scouts of Oregon and Southwest Washington's headquarters provides a variety of spaces for your meetings, trainings, activities, projects, and Girl Scout supply needs. Visit the Girl Scout Shop for uniform essentials, Girl Scout tees, and more! Create culinary delights in the large learning kitchen. Organize activities or conduct workshops in one of the small, medium, or large meeting rooms equipped with the tools you need to host a productive gathering. Wi-Fi, phones, built-in projection system and a digital media studio are on-site. Reservations may be made through the front desk at 503-977-6800, or toll free at 800-338-5248. Address: 9620 SW Barbur Blvd., Portland, OR 97219. Office hours: Monday-Friday, 9 a.m. - 5 p.m. Shop hours: Monday-Friday, 9 a.m. - 5 p.m.; Saturdays, 10 a.m. - 3 p.m.; Wednesdays 9 a.m. - 7 p.m. September through June.





# How To Reserve

---

## 1. SELECT YOUR PROPERTY

To see what is best for your next adventure, meeting, or special event, take a look at our property locations map and descriptions in this guide or on our website at [girlscoutsosw.org/properties](http://girlscoutsosw.org/properties).

## 2. CHECK THE AVAILABILITY

Girl Scout troop leaders may check availability at [calendar.girlscoutsosw.org/calendar](http://calendar.girlscoutsosw.org/calendar) (password protected - contact service unit event and travel coordinator for access) or contact the site registrar at [property@girlscoutsosw.org](mailto:property@girlscoutsosw.org) or 503-977-6834. Non-Girl Scout groups can contact the site registrar for available locations and dates.

## 3. RESERVE

From [girlscoutsosw.org/properties](http://girlscoutsosw.org/properties), Girl Scout members may download the Girl Scout Program Site Agreement and submit with payment to the site registrar to lock in your dates. Non-Girl Scouts who are interested in making a reservation may contact the site registrar at [property@girlscoutsosw.org](mailto:property@girlscoutsosw.org) or 503-977-6834.

## 4. CONFIRMATION

Your reservation will be confirmed via email. Further details will be provided upon confirmation.

## QUESTIONS

Questions about reservations? Contact [property@girlscoutsosw.org](mailto:property@girlscoutsosw.org) or 503-977-6834.

# Information For Volunteers

---

## SAFETY ACTIVITY CHECKPOINTS

*Safety Activity Checkpoints* (SAC) is a resource that provides safety standards and guidelines for Girl Scout-approved activities. Following SAC guidelines ensures that all activities are planned and carried out in a manner that considers the health, safety, and general well-being of all participants in attendance at Girl Scout activities. Some activities are considered high risk and need to be planned through a vendor/provider who has been designated as an approved outfitter by GSOSW. When planning your adventures at Girl Scout properties, be sure to review *Safety Activity Checkpoints* to ensure a safe and fun experience! You can find a list of GSOSW approved outfitters at [girlscoutsosw.org/activities](http://girlscoutsosw.org/activities), and view the most recent edition of SAC at [girlscoutsosw.org/forms](http://girlscoutsosw.org/forms).

## QUESTIONS

Question about SAC, approved outfitters or training? Contact [answers@girlscoutsosw.org](mailto:answers@girlscoutsosw.org), we're here to help!

## VOLUNTEER TRAINING

It's important to be prepared on day trips or overnight travel with your Girl Scout troop! Depending on the length and nature of your trip, different adult training requirements apply. Check *Volunteer Essentials* and *Safety Activity Checkpoints* for required and recommended training opportunities. Courses like Day Trips, Indoor Overnight and Outdoor Skills help adult volunteers assist girls through the planning and implementation of a safe, fun and successful adventure. Sign up for upcoming trainings at [girlscoutsosw.org/activities](http://girlscoutsosw.org/activities).

Volunteers are also encouraged to make the most of Venture Out!, an interactive online learning tool offering practical tips and tricks, stories from other volunteers and an exploration of the joys of taking girls outside. Check it out at [gsuniversity.girlscouts.org/resource/venture-out](http://gsuniversity.girlscouts.org/resource/venture-out).





# DO EVEN MORE AT GSOSW PROPERTIES

At Girl Scout summer overnight camp, girls are supported by camp staff as they gain new skills, make new friends and try new things. Camp staff are specially trained to teach girls how to safely climb a rock wall, windsurf and much more! From classic camp and specialty camps to family and troop camps, there is a new adventure waiting for every **G.I.R.L.** (Go-getter, Innovator, Risk-taker, Leader)™!



Register for overnight and day camp today!  
[www.girlscoutsosw.org/camp](http://www.girlscoutsosw.org/camp)





*Your next*  
**ADVENTURE**  
*starts here!*

Explore GSOSW properties.

